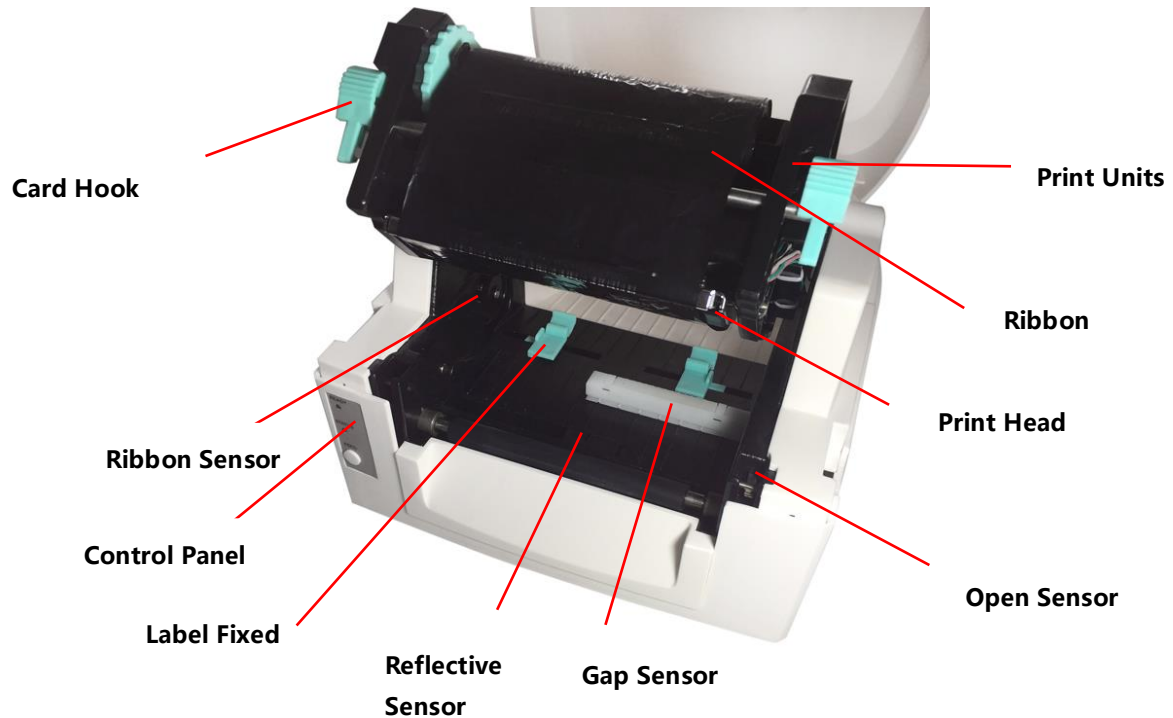


## Structure Of The Network Printer



**Barcode Printer**



**AC Adapter**



**Power Line**



**Ribbon Shafts**



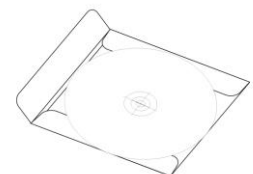
**USB Cable**



**Paper Clips**



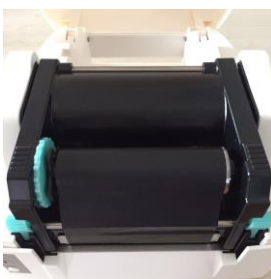
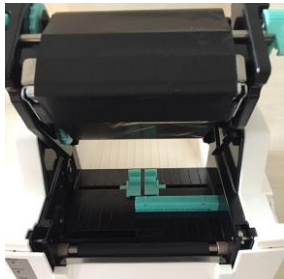
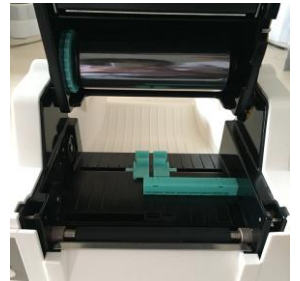
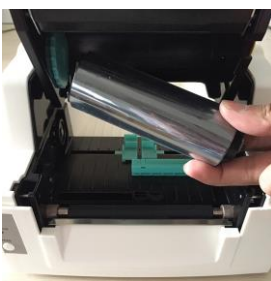
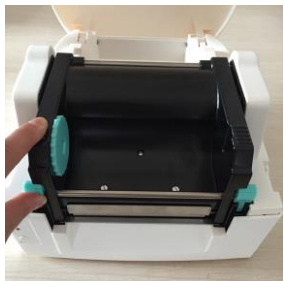
**Label Shaft**



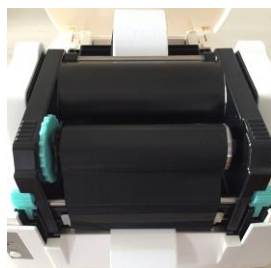
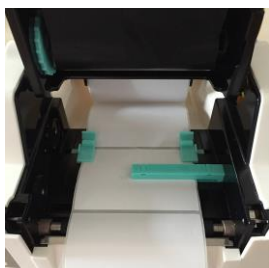
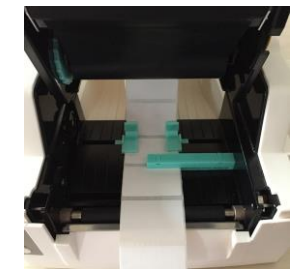
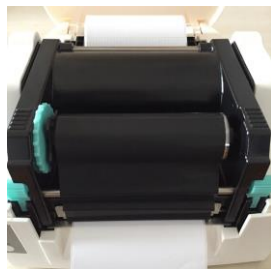
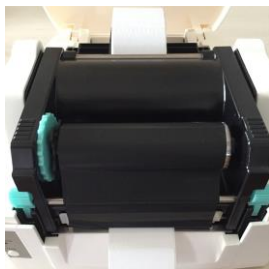
**CD**

**Note:** do not use hand to touch the print head do not plug the power line when machine not turns off

## 1.How to install ribbon

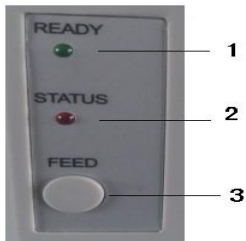


## 2.How to install label or sticker



**Note: do not use hand to touch the print head do not plug the power line when machine not turns off**

## 3.Label position automatically



when the printer is ready,pls press feed button till the green and red lights shine,then the label will be detected to the correct position.

## 4.All types of the label detection mood

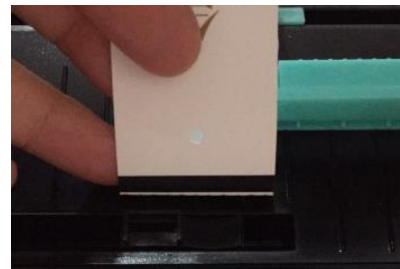
(1)Gap label: Detects label position automatically by gap paper sensor.

The label include: die-cut label,Perforated gaps



(2)Black mark label: Detects label position automatically by reflective paper sensor.

The label include: Mark wristbands,Mark gaps and labels



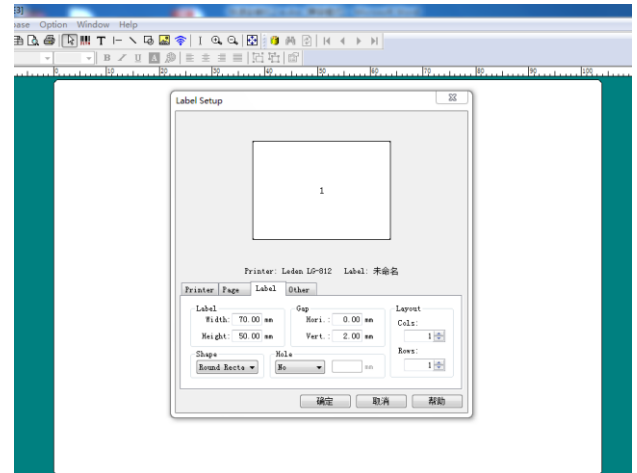
★If paper just move a little or the STATUS light on when paper walk, close printer and repeat steps 1-3,the continues label do not need to detect.

**Note:** do not use hand to touch the print head do not plug the power line when machine not turns off

## 5.Install Labelshop for LEDEN V5.32 software(Don't need to install printer driver,pls print directly)

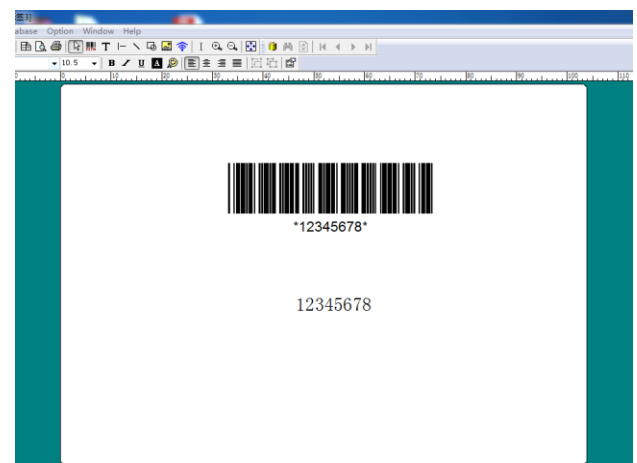
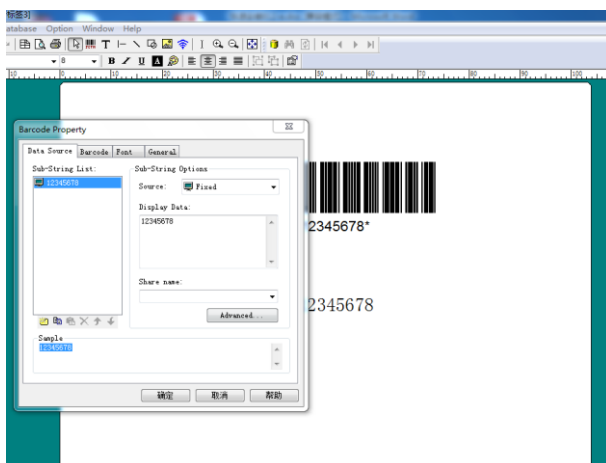
- 1.Put CD into the disk driver.
- 2.Click the software installer.

3. Follow the installation steps.
- 4.Choose the printer resolution (203dpi 或 300dpi).



- 5.According to the label size,set width(from left to right) and height(from up to down).

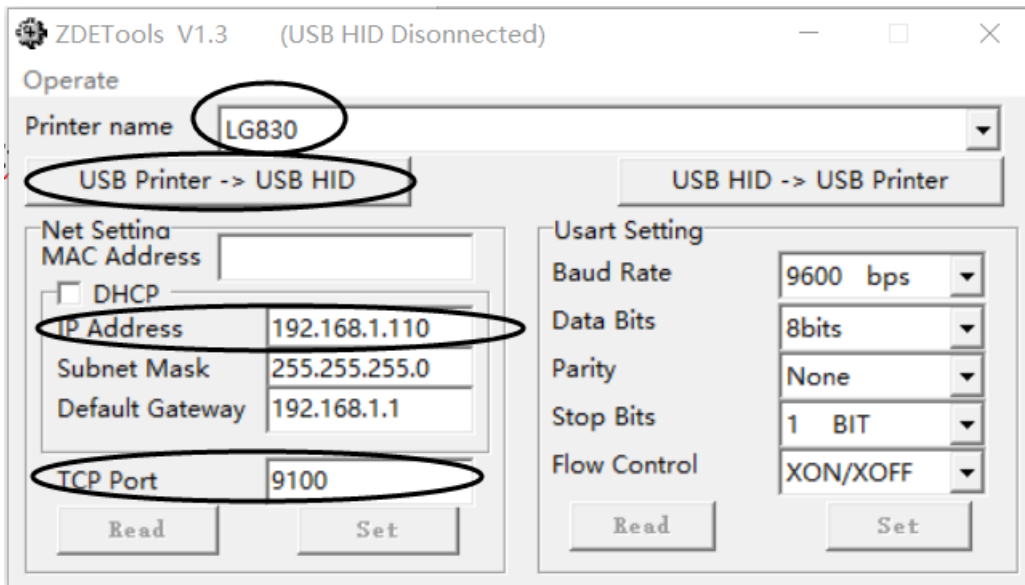
- 6.You can edit font,barcode,print database and so on.  
The printer has standard interface:USB2.0,Serial and Ethernet,you can choose by yourself.



**Note: do not use hand to touch the print head do not plug the power line when machine not turns off**

## 6.How to use network?

Pls install printer driver frist(LG820 or LG830),then open the ZDEtools,as follow:



1. Choose right printer name.
2. Click USB Printer – USB HID,you can hear the voice,it means that have linked with printer.
3. Pls click read and can see its settings,then fill in IP Address and TCP port and set.
4. When finished all settings ,pls Click USB HID – USB Printer then can use network funtions.
5. During printing,if meet hard to reaction label,pls use operate-label setting,if want to reset,pls use Operate-reset default.

※ More detailed instructions on the printer operation, please visit

LEDEN official website [www.leden.net.cn](http://www.leden.net.cn).

**Note:** do not use hand to touch the print head do not plug the power line when machine not turns off